

AREA CALCULATIONS

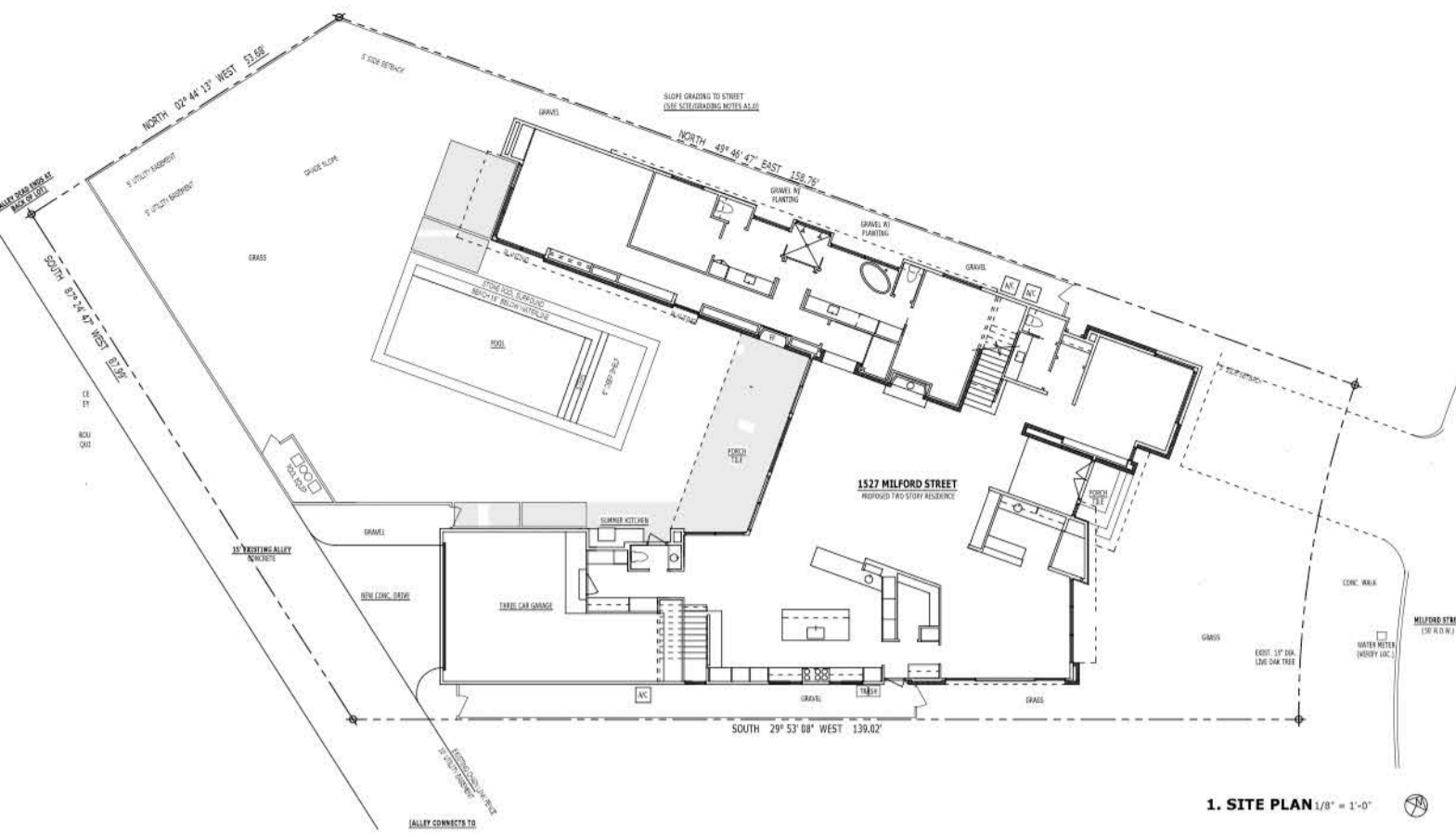
FIRST FLOOR A.C.	6,163 SQ. FT.
SECOND FLOOR A.C.	3,335 SQ. FT.
TOTAL A.C. SPACE	9,498 SQ. FT.
GARAGE + MECHANICAL	905 SQ. FT.
COVERED PORCH	448 SQ. FT.
MALLOTT	325 SQ. FT.
TOTAL FINISHED AREA	7,828 SQ. FT.

PREVIOUS CALC

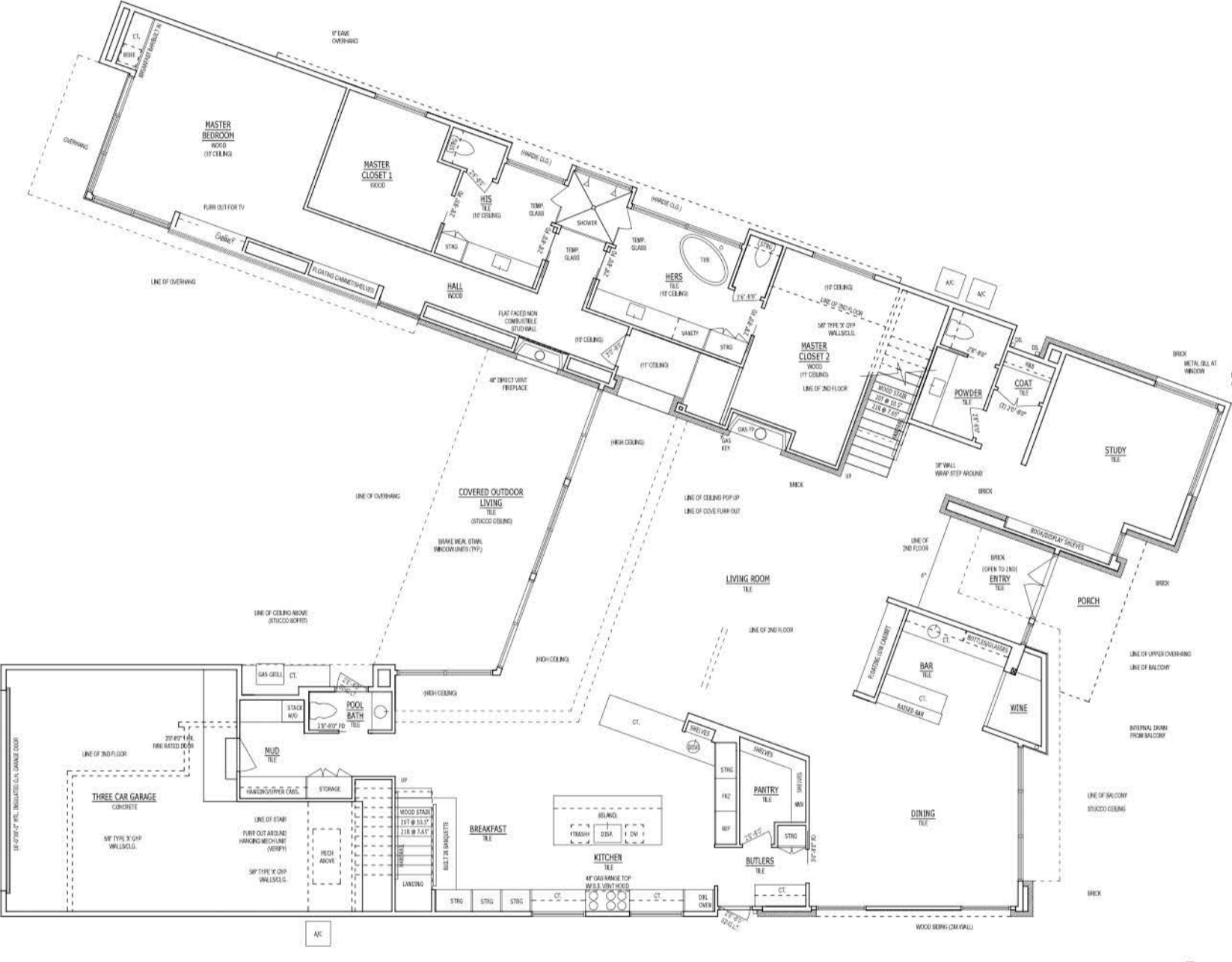
FOUNDATION FOOTPRINT	4,828 SQ. FT.
DRIVEWAYS/PORCH	1,000 SQ. FT.
TOTAL DIFFERENTIAL AREA	5,828 SQ. FT.
LOT AREA	13,301 SQ. FT.
IMPERVIOUS COVERAGE	43.1%

LEGAL DESCRIPTION

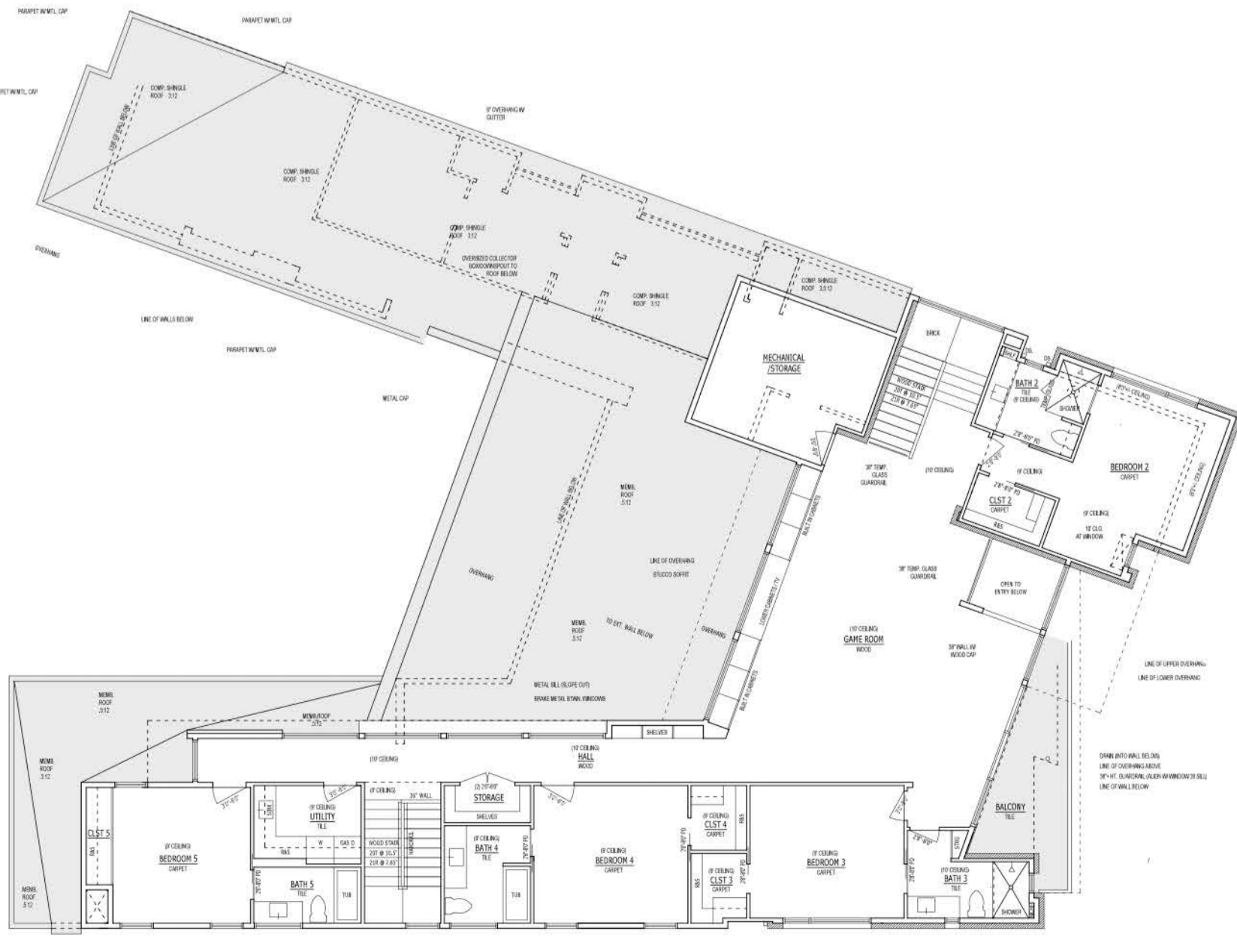
LOT 24 OF BLOCK 22, ACCORDING TO THE PLAT RECORDED IN VOLUME 22, PAGE 44 OF THE MAP RECORDS OF HAWAII COUNTY, TERR.



A1.0



A2.0



A2.1